



# TeamEnergy<sup>SM</sup>

YOUR OUTSOURCED ENERGY MANAGER

July 02, 2010



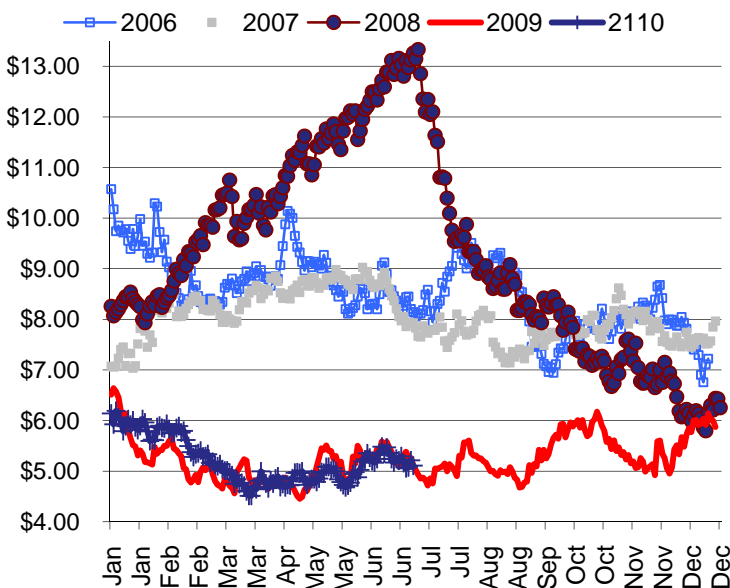
## ENERGY LINE

TONY BROWN @ 317.915.0915 or [tbrown@team-energy.com](mailto:tbrown@team-energy.com)

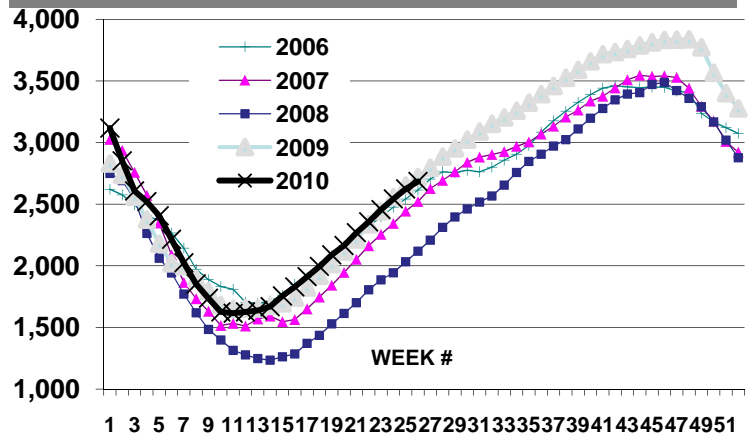
### ON THE NYMEX MARKET

NG prices for August lost 20 cents last week, but are about 50 cents higher than toward the end of May 2010. Given the HOTTER-than-normal weather and smallish storage injections the 50 cent pop is mild. We are going to have some very hot weather most of this week but if you can trust weather forecasts things should cool down. See the weather maps on the second page. NG normally headed for storage this time of year has been redirected to cooling. Total gas in storage stands at 2,684 bcf, about 12% above the five-year average and 1% below last year. The tropical weather front appears to be quite this week. A bonus is the dust blown from the Saharan desert and is now in the eastern Atlantic atmosphere which hinders tropical storm development. The NYMEX 12 month strip continues to follow the same path as last year. Hot weather most of this week will challenge the path.

### The NYMEXNG Strip



### Gas in Storage

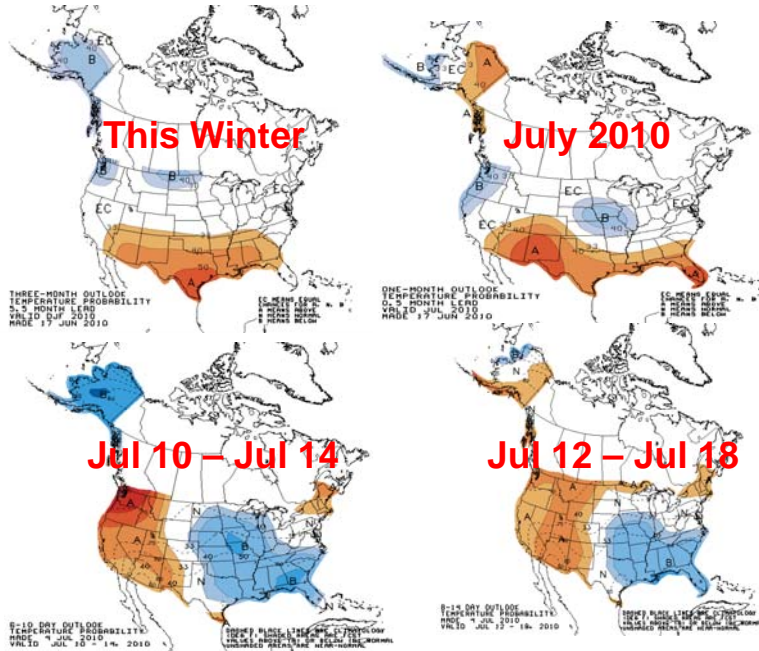


EIA Storage Report week ended 06/25/10

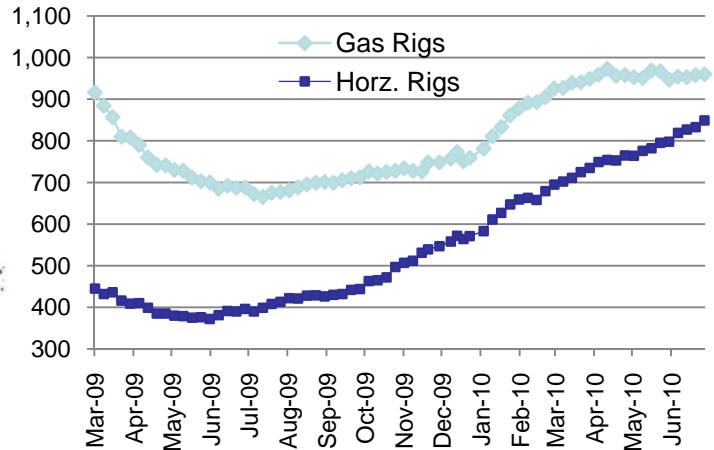
	<u>2010</u>	<u>% Full</u>	<u>2009</u>	<u>2008</u>
Working Gas in Storage	2,684	69%	2,711	2,188

The information shown in this newsletter has been obtained from sources we believe to be reliable but Team Energy, Inc. does not guarantee the accuracy of the information. This information is a resource, but is not a recommendation by Team Energy to purchase or sell natural gas or electricity.

## Weather Forecast

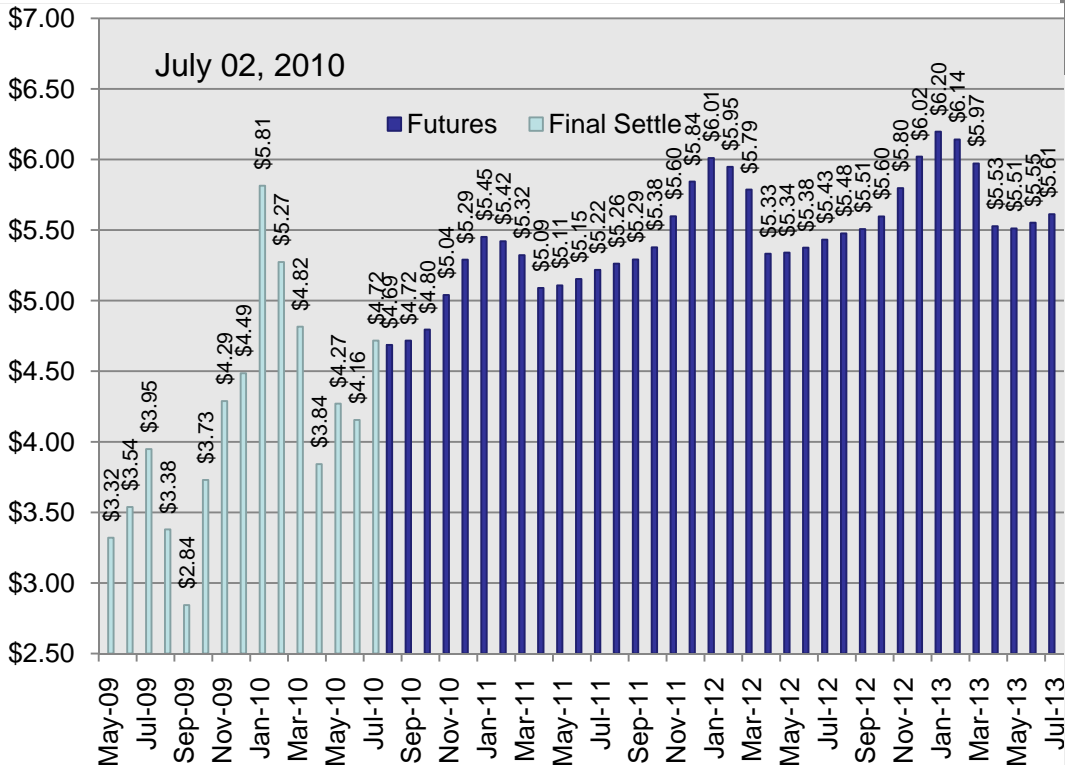


## Rig Count



North American natural gas rig count according to Baker Hughes this week was 960 up 2 from last week. Horizontal rigs reflect the search for natural gas in shale formations. Includes horizontal oil rigs.

## NYMEX FUTURES



## SHALE FACTS



According to a 2008 study by Navigant Consulting the U.S. has 100 years worth of natural gas supply. The chart above highlights the natural gas in shale rock formations.