

TeamEnergySM

YOUR OUTSOURCED ENERGY MANAGER

June 25, 2010



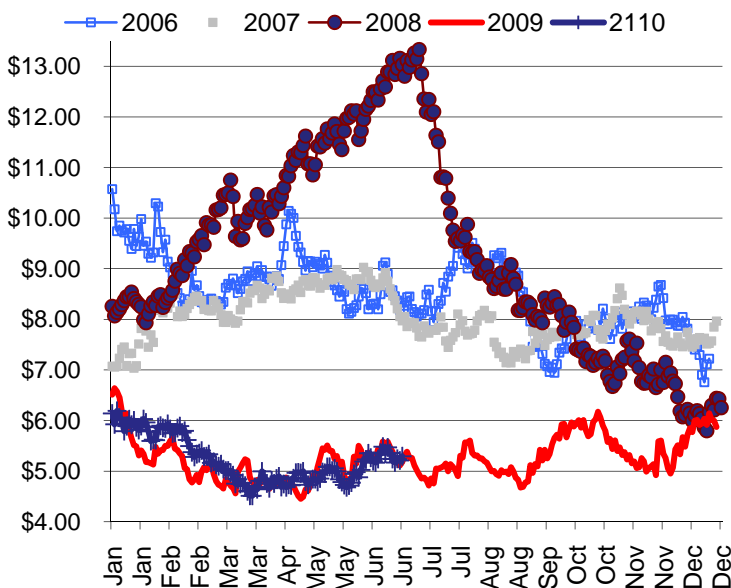
ENERGY LINE

TONY BROWN @ 317.915.0915 or tbrown@team-energy.com

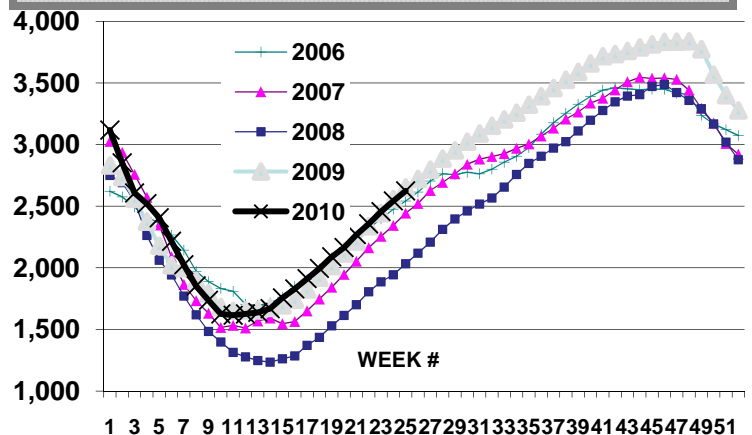
ON THE NYMEX MARKET

NG prices lost ground last week and July seems firmly planted in the \$4 range after spending much of the prior week in the \$5. We may have seen some profit taking. Last week we said “ The NYMEX 12 month strip has been following the same path as last year.” That pattern continues as we did get a slightly cooler weather forecast. It is also important to note that the July 4th timeframe is historically the lowest period for NG consumption as industrial plants shut down for an extended weekend. NG storage has recently posted injections that average 90 bcf. Last year the average injection for July was only 74 bcf. The ample supply and the positive storage comparisons will continue keep the lid on prices. The hurricane and very hot weather is about the only fundamental that will push prices back above the \$5 mark. We are likely to see a price rollercoaster as the hurricanes roll into the Gulf. We still think the effect will be muted because of the added shale production.

The NYMEXNG Strip



Gas in Storage

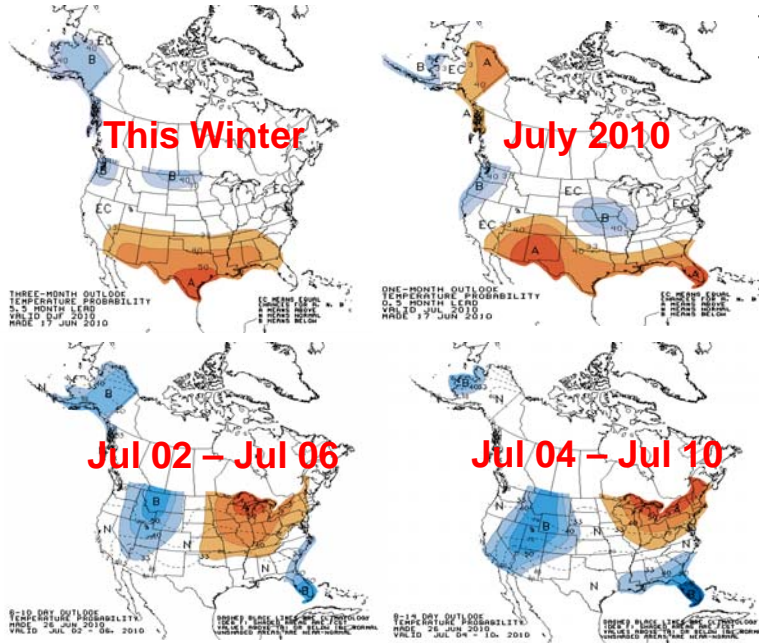


EIA Storage Report week ended 06/18/10

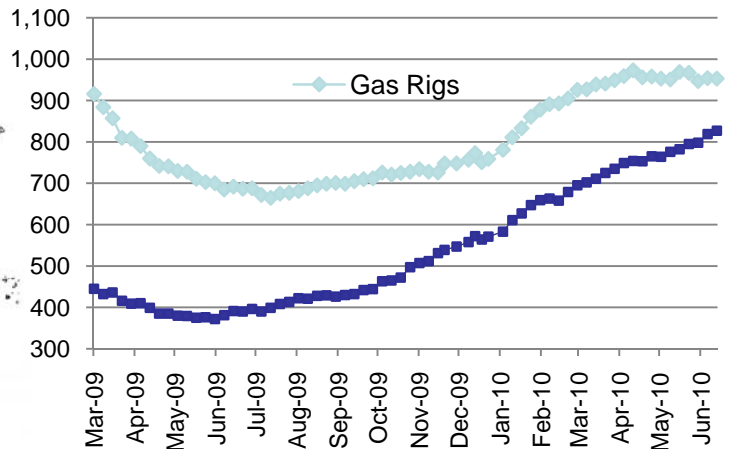
	<u>2010</u>	<u>% Full</u>	<u>2009</u>	<u>2008</u>
Working Gas in Storage	2,624	67%	2,638	2,033

The information shown in this newsletter has been obtained from sources we believe to be reliable but Team Energy, Inc. does not guarantee the accuracy of the information. This information is a resource, but is not a recommendation by Team Energy to purchase or sell natural gas or electricity.

Weather Forecast

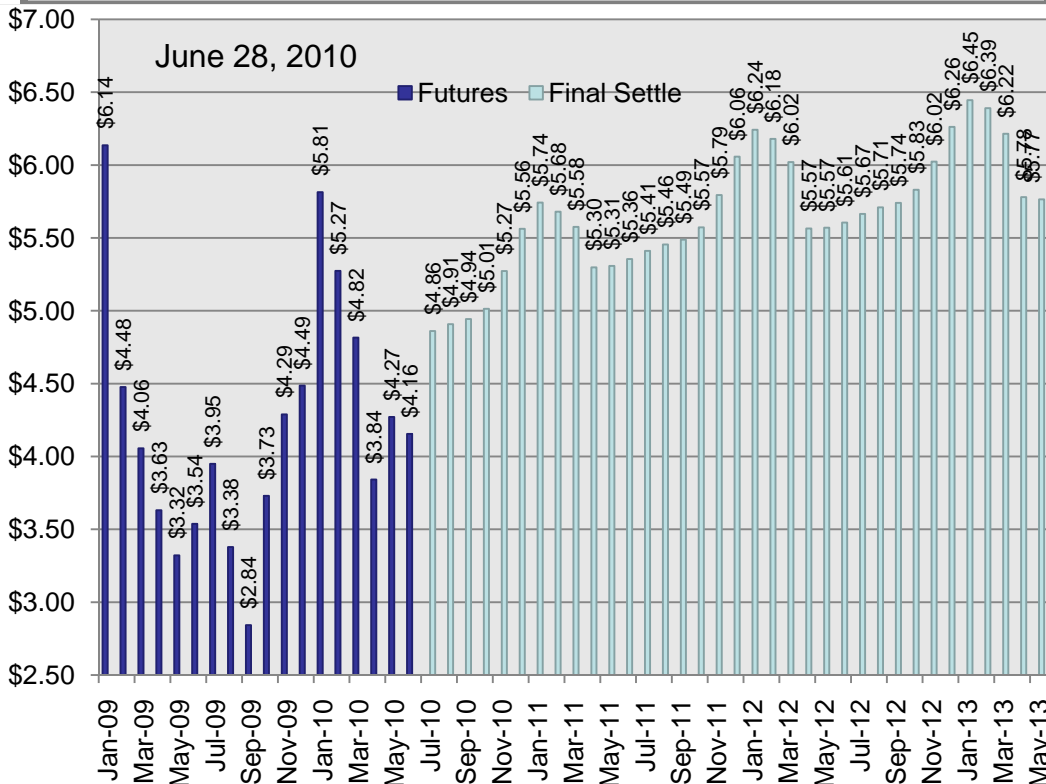


Rig Count



North American natural gas rig count according to Baker Hughes this week was 958 up 5 from last week. Horizontal rigs reflect the search for natural gas in shale formations. Includes horizontal oil rigs.

NYMEX FUTURES



SHALE FACTS



According to a 2008 study by Navigant Consulting the U.S. has 100 years worth of natural gas supply. The chart above highlights the natural gas in shale rock formations.