

TeamEnergySM

YOUR OUTSOURCED ENERGY MANAGER

May 14, 2010



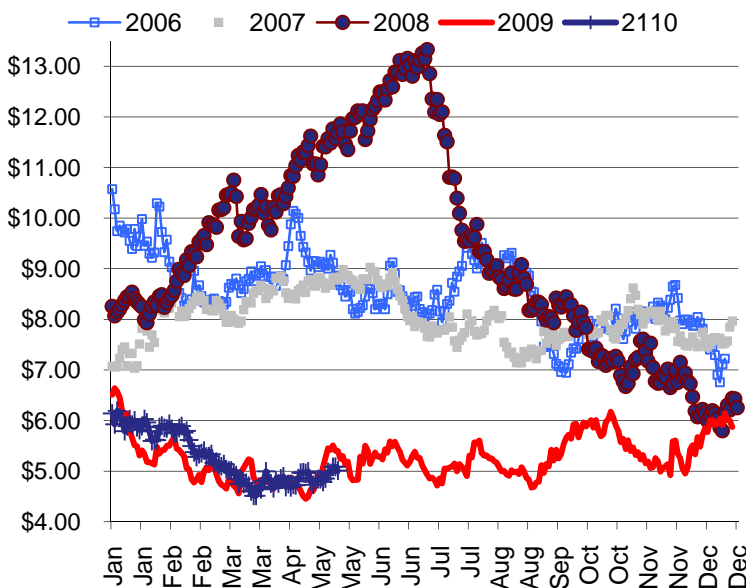
ENERGY LINE

TONY BROWN @ 317.915.0915 or tbrown@team-energy.com

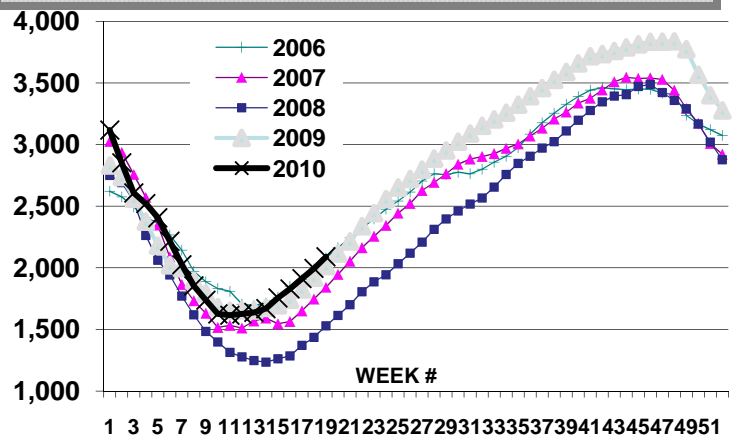
ON THE NYMEX MARKET

NG sprung up seven percent over last Friday. Upbeat reports on U.S. shoppers and factories last week have added to the picture of an economy firmly in recovery mode. Added support came from a 5 percent reduction in net-short positions. We are still in a high net-short position historically. The storage report at 94 bcf was less than the market expected. Storage has several tough comparisons over the next several weeks. Storage is 100 bcf or 5 percent above last year. Crude Oil on the other hand closed below \$72. Crude Oil is being weighted down by concerns about Europe's ability to contain its sovereign debt crisis. The higher dollar, Europe's feeble economy and China's attempt to slow their economy will cut U.S. export demand. To what extent will this slow the overall U.S. economy and the demand for NG? Hot weather, hurricanes, storage injections and short covering will drive the market for now.

The NYMEXNG Strip



Gas in Storage

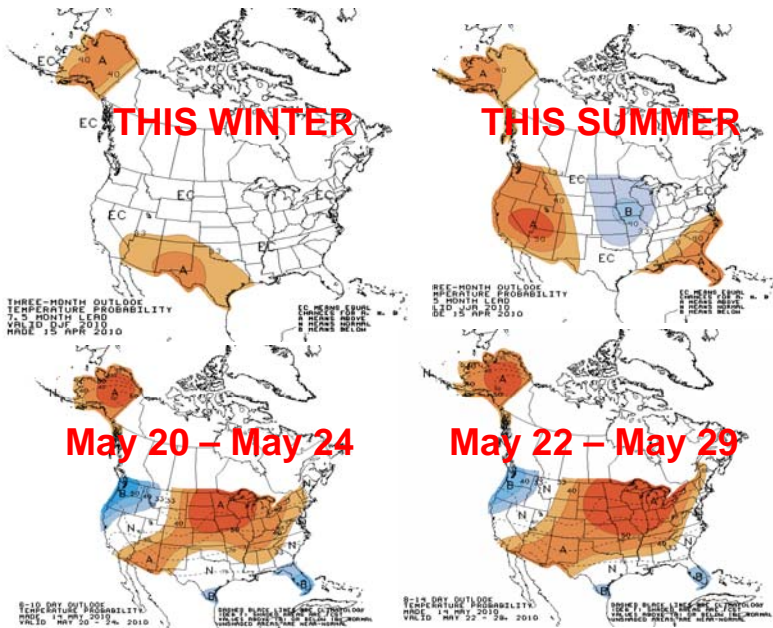


EIA Storage Report week ended 05/07/10

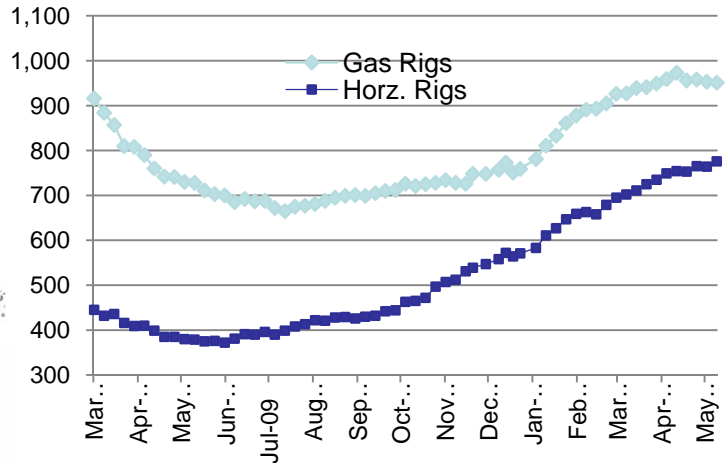
	<u>2010</u>	<u>% Full</u>	<u>2009</u>	<u>2008</u>
Working Gas in Storage	2,089	54%	1,992	1,529

The information shown in this newsletter has been obtained from sources we believe to be reliable but Team Energy, Inc. does not guarantee the accuracy of the information. This information is a resource, but is not a recommendation by Team Energy to purchase or sell natural gas or electricity.

Weather Forecast

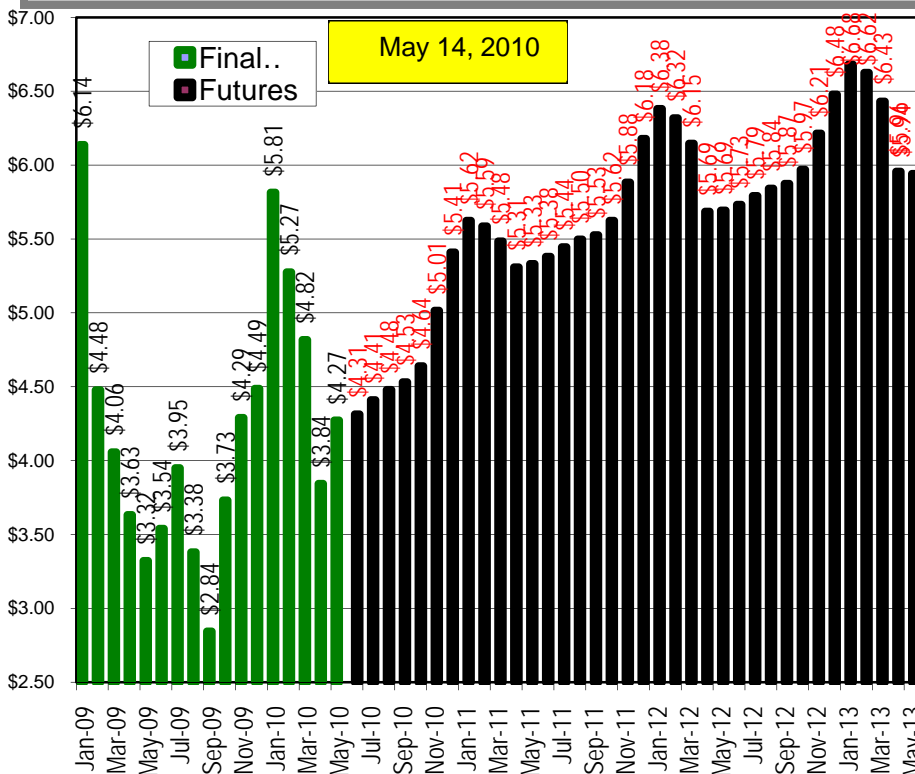


Rig Count



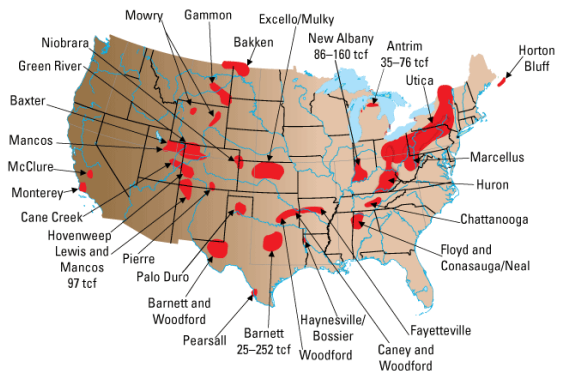
North American natural gas rig count according to Baker Hughes this week was 951 down 2 from last week. Horizontal rigs reflect the search for natural gas in shale formations. Includes horizontal oil rigs.

NYMEX FUTURES



SHALE FACTS

Major US shale basins.



According to a 2008 study by Navigant Consulting the U.S. has 100 years worth of natural gas supply. The chart above highlights the natural gas in shale rock formations.