



TeamEnergySM

YOUR OUTSOURCED ENERGY MANAGER

May 07, 2010



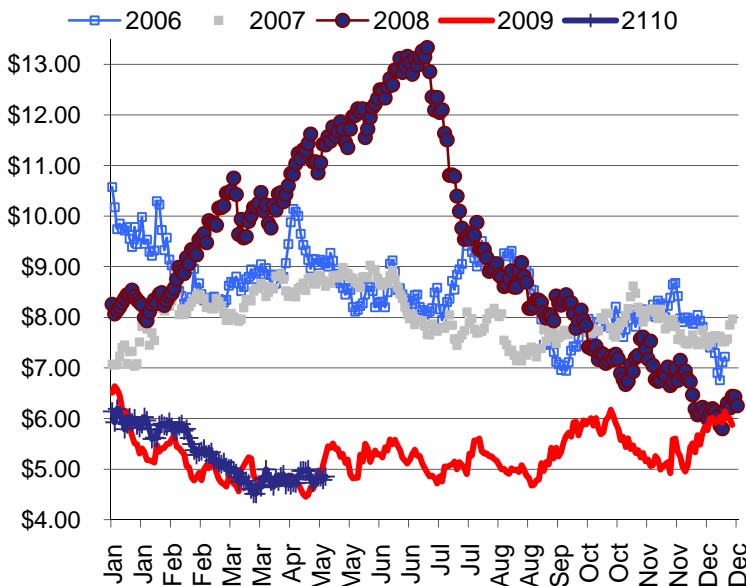
ENERGY LINE

TONY BROWN @ 317.915.0915 or tbrown@team-energy.com

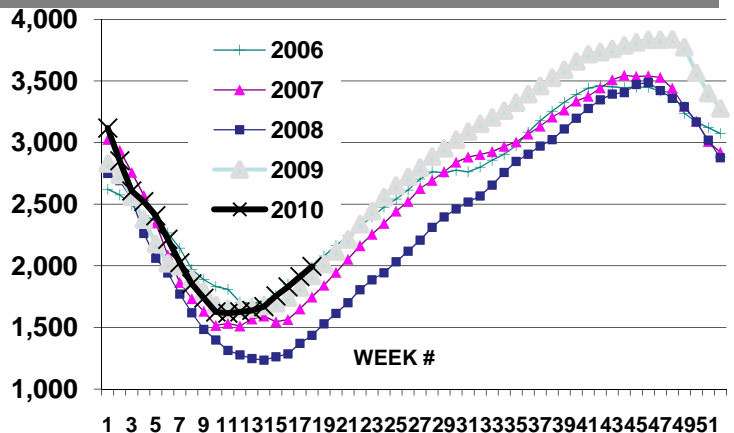
ON THE NYMEX MARKET

For the week, crude oil prices are down \$11.08, a 12.9% decrease over the course of just four trading days. Friday's 3-day drop of \$9.08 ranked 18th on the all-time list of biggest drops in real dollars. Driving the downward swing of the market is the ongoing Greek debt crisis, which has investors of all breeds spooked. The Greek crisis could spread across Europe but the IMF loan will at least delay the problem. The question is whether this will delay the U.S. economic recovery? In the NG market, prices moved up past the \$4 mark again, rising \$0.09 to settle at \$4.02 for the week. The small rebound in NG prices comes after a larger than expected build in inventories on Thursday and seems to be driven largely by somewhat positive unemployment news. The NG 12 month strip has trading in a 50 cent trading range since mid-March. We need big storage injections to break out of the range.

The NYMEXNG Strip



Gas in Storage

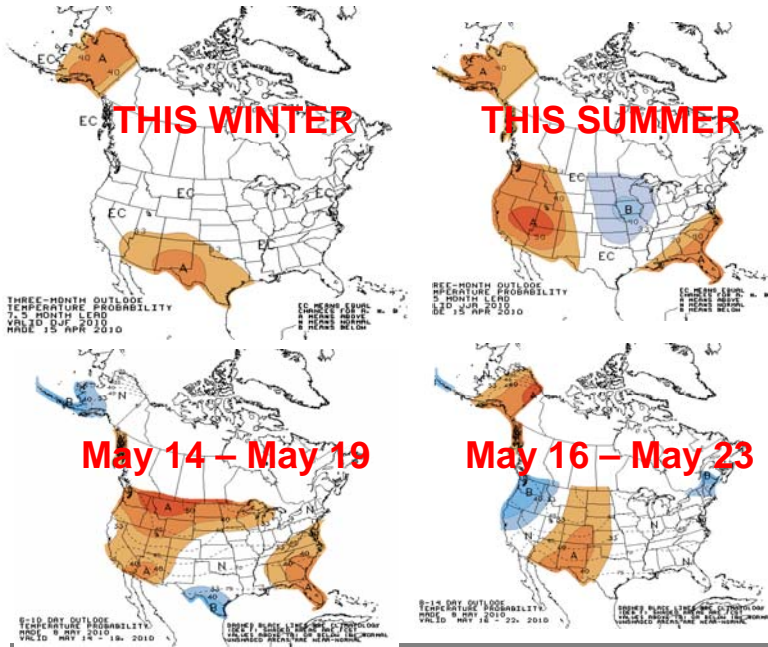


EIA Storage Report week ended 04/30/10

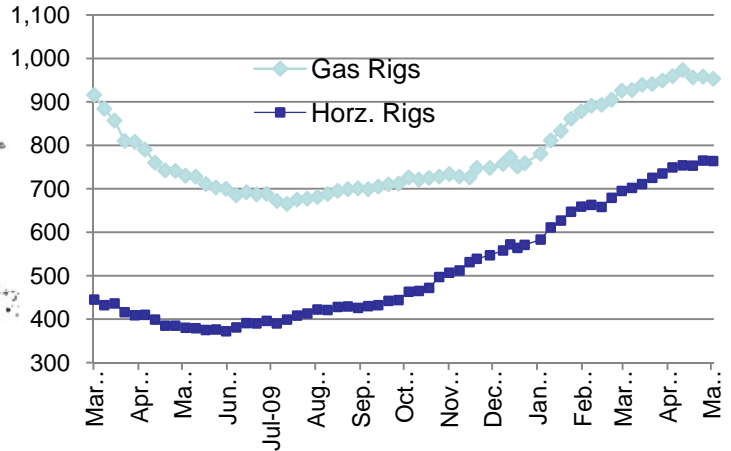
	<u>2010</u>	<u>% Full</u>	<u>2009</u>	<u>2008</u>
Working Gas in Storage	1,995	51%	1,898	1,436

The information shown in this newsletter has been obtained from sources we believe to be reliable but Team Energy, Inc. does not guarantee the accuracy of the information. This information is a resource, but is not a recommendation by Team Energy to purchase or sell natural gas or electricity.

Weather Forecast

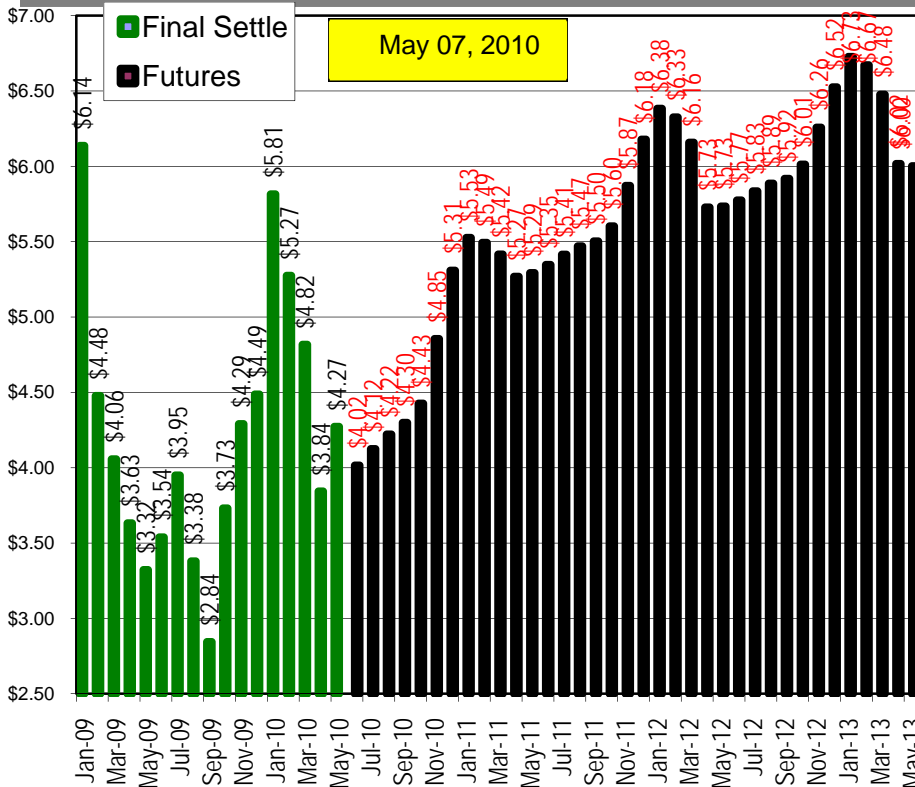


Rig Count



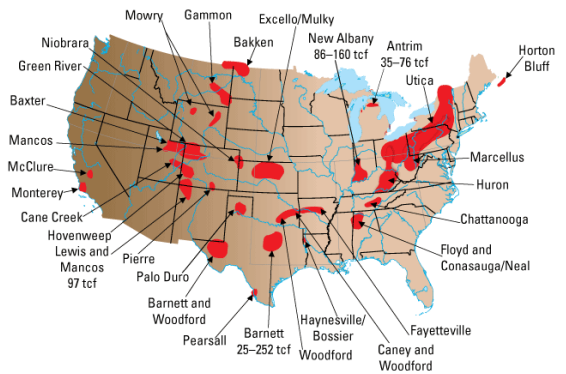
North American natural gas rig count according to Baker Hughes this week was 953 down 5 from last week. Horizontal rigs reflect the search for natural gas in shale formations. Includes horizontal oil rigs.

NYMEX FUTURES



SHALE FACTS

Major US shale basins.



According to a 2008 study by Navigant Consulting the U.S. has 100 years worth of natural gas supply. The chart above highlights the natural gas in shale rock formations.