



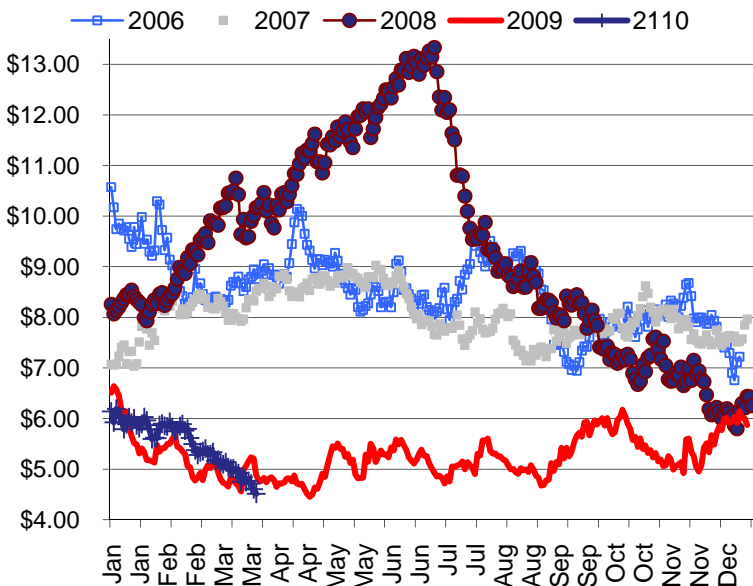
ENERGY LINE

TONY BROWN @ 317.915.0915 or tbrown@team-energy.com

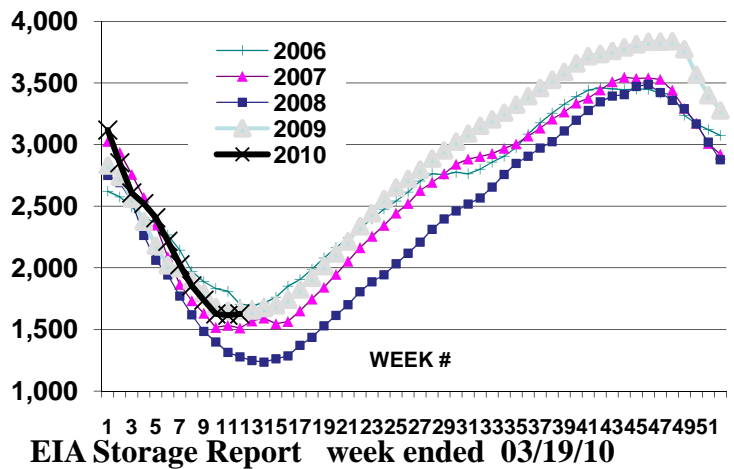
ON THE NYMEX MARKET

The April NG contract lost 30 cents last week and broke through the \$4 level. April gave up 10 cents Friday after oil-field service company Baker Hughes reported the number of rigs drilling for gas in the U.S. last week was 941, an increase of two rigs from last week. Although gas prices have fallen about 33% since early January as the arrival of spring weather curbs gas heating demand, most producers haven't scaled back their operations. Production from shale will grow significantly this year. The Marcellus shale should grow to 4-5 bcf per day or 8% of U.S. requirements. Overall shale production will rise to more than 40 % of U.S. volumes. Shale NG can be produced for about \$3.50 to \$4.00 per Dth. Given the current prices that doesn't sound that attractive however producers can lock in prices in the high \$5.00 range out several years. In addition if storage fills rapidly the September 2009 low of \$2.84 could be repeated. We could also see a hot summer and hurricane activity that could offset the new supply.

The NYMEXNG Strip



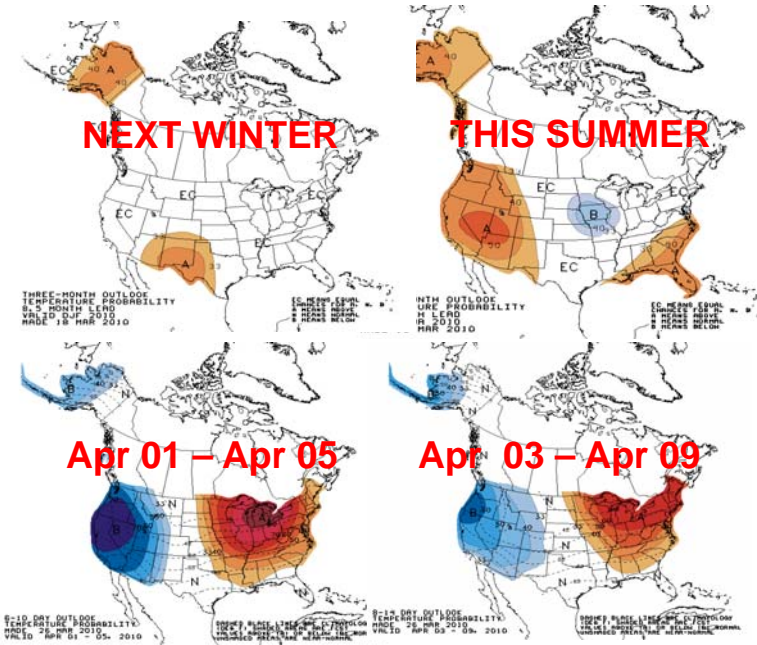
Gas in Storage



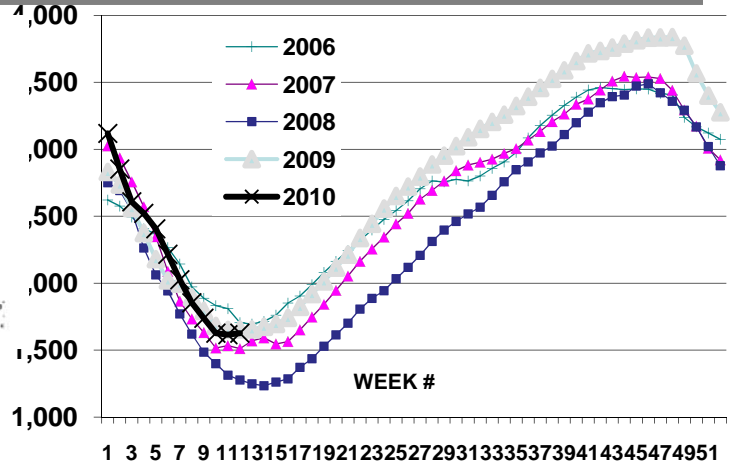
	<u>2010</u>	<u>% Full</u>	<u>2009</u>	<u>2008</u>
Working Gas in Storage	1,626	42%	1,654	1,277

The information shown in this newsletter has been obtained from sources we believe to be reliable but Team Energy, Inc. does not guarantee the accuracy of the information. This information is a resource, but is not a recommendation by Team Energy to purchase or sell natural gas or electricity.

Weather Forecast

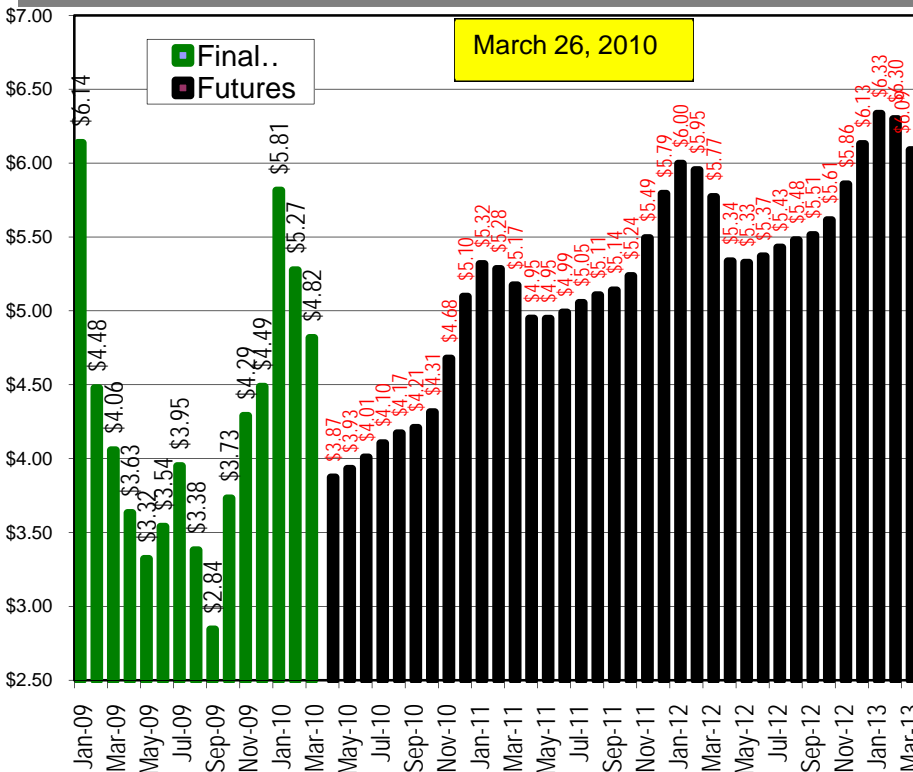


Rig Count



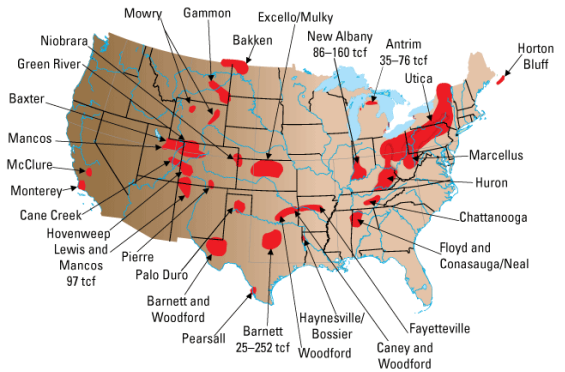
North American natural gas rig count according to Baker Hughes this week was 941 up 2 from last week. Horizontal rigs reflect the search for natural gas in shale formations. Includes horizontal oil rigs.

NYMEX FUTURES



SHALE FACTS

Major US shale basins.



According to a 2008 study by Navigant Consulting the U.S. has 100 years worth of natural gas supply. The chart above highlights the natural gas in shale rock formations.