



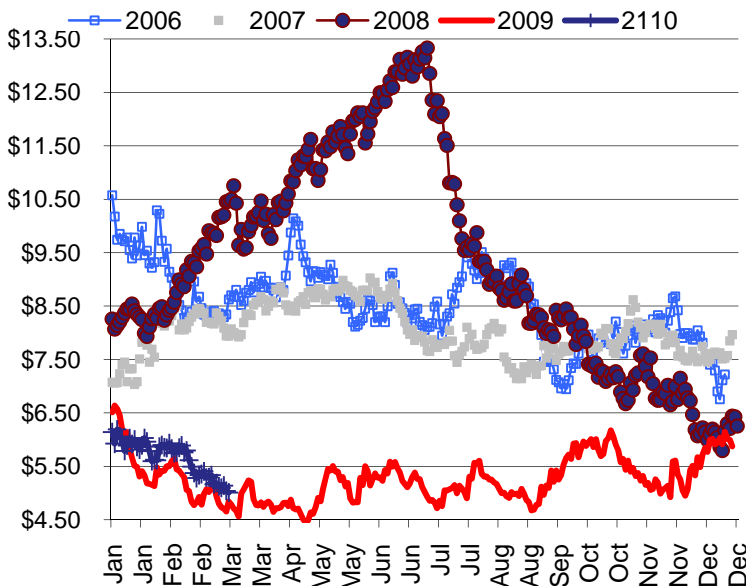
ENERGY LINE

TONY BROWN @ 317.915.0915 or tbrown@team-energy.com

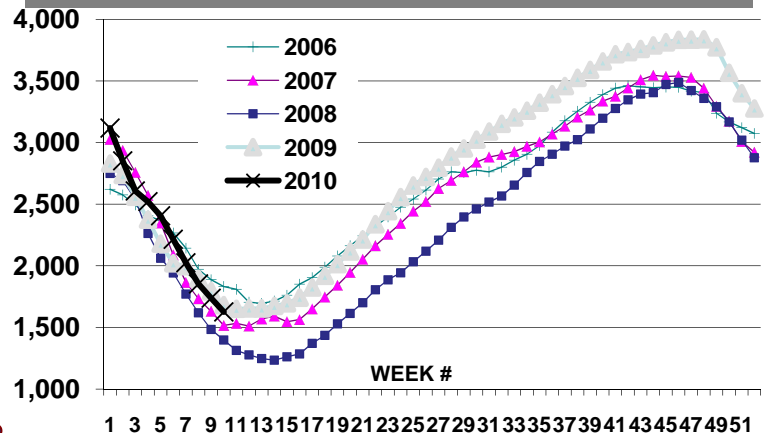
ON THE NYMEX MARKET

The April NG contract dropped 19 cents last week and nearly one dollar in 30 days. Winter is deemed over so weather is no longer a factor in prices. The factor that can push prices lower is the weekly storage report. The storage reports in the next 3 to 5 weeks will determine exactly where the first quarter low will end up. Pricing on Wednesday and Thursday will be volatile as traders place bets on the storage report. In April we are in a period when the demand for both heating and cooling is very low. Shortly after April, traders will start betting on summer heat and hurricanes. As more NG is produced on-shore from shale formation, price volatility during hurricane season is somewhat muted. Barclays Capital's analyst is even more bearish this week, last week he said "The shoulder season is likely to lead to deteriorating gas prices. We would not be surprised to see gas prices in the **\$2.50-3.50** range at times over the next 6-8 months. We believe there is downside risk to our 2010 estimate of Henry Hub price of **~\$5/Dth**".

The NYMEXNG Strip



Gas in Storage

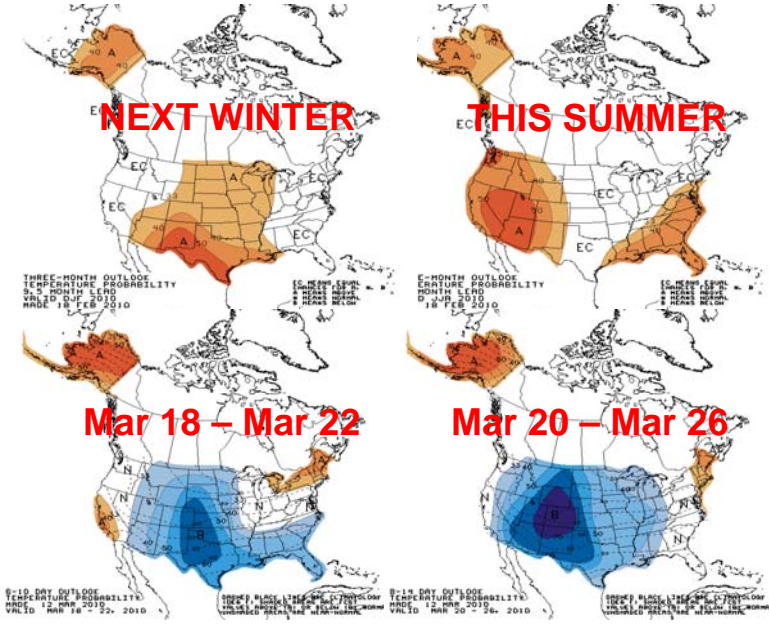


EIA Storage Report week ended 03/05/10

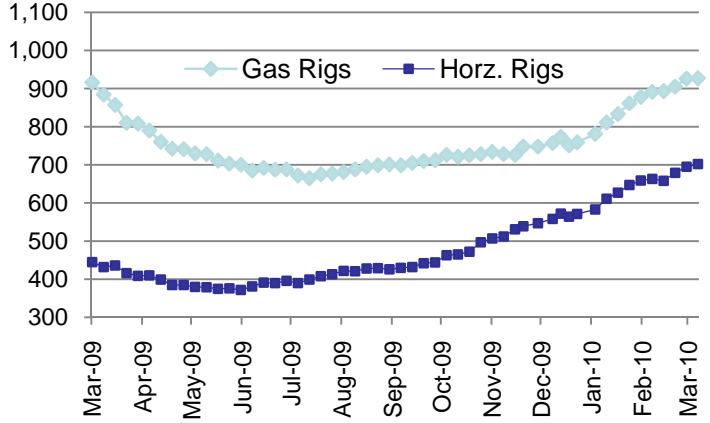
	<u>2010</u>	<u>% Full</u>	<u>2009</u>	<u>2008</u>
Working Gas in Storage	1,626	42%	1,697	1,398

The information shown in this newsletter has been obtained from sources we believe to be reliable but Team Energy, Inc. does not guarantee the accuracy of the information. This information is a resource, but is not a recommendation by Team Energy to purchase or sell natural gas or electricity.

Weather Forecast

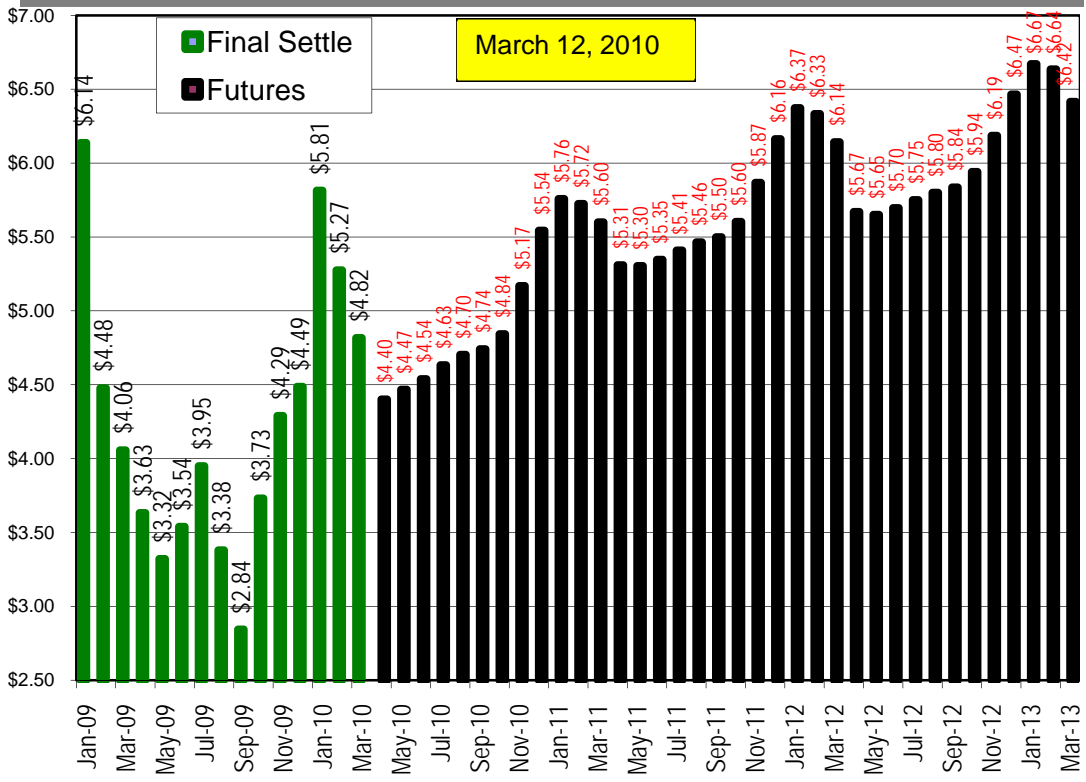


Rig Count



North American natural gas rig count according to Baker Hughes this week was 927 up 1 from last week. Horizontal rigs reflect the search for natural gas in shale formations. Includes horizontal oil rigs.

NYMEX FUTURES



FACTS



According to a 2008 study by Navigant Consulting the U.S. has 100 years worth of natural gas supply. The chart above highlights the natural gas in shale rock formations.